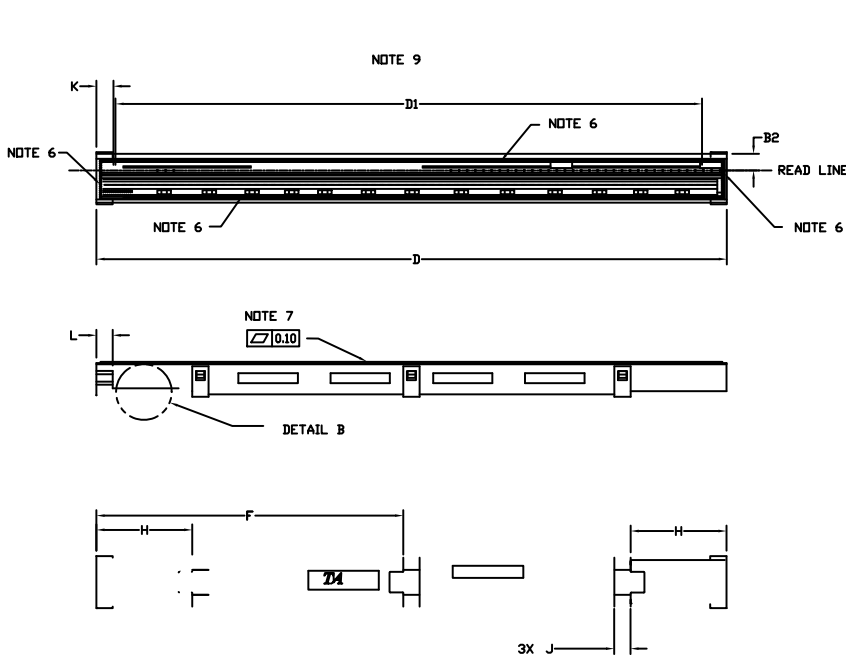


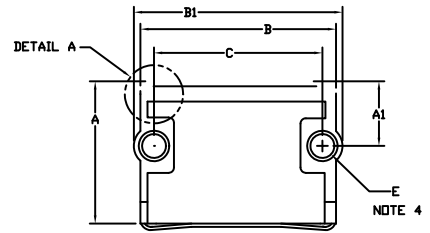
**IMAGE SENSOR MODULE
CASE MODAC
ISSUE A**

DATE 11 MAY 2010



NOTE 3

DETAIL A



PIN 1
NOTE 5

DETAIL B

NOTES:

1. DIMENSIONING AND TOLERANCING PER ASME Y14.5M, 1994.
2. CONTROLLING DIMENSION: MILLIMETERS.
3. LEADING EDGE OF THE APPROACH ANGLE ON THE GLASS IS LOWER THAN THE TOP OF THE HOUSING.
4. BORE DEPTH IS 6.0 WITH A 0.3 LEAD-IN CHAMFER.
5. PIN HEADER, MODEL NUMBER EBW-PK23-P010L2-3Z, 1X10 PIN, PITCH 1.25.
6. GLASS IS GLUED ON ALL 4 SIDES.
7. GLASS THICKNESS IS 1.85.
8. USE M2.3 SELF TAPPING SCREWS FOR MOUNTING. TORQUE SCREWS BETWEEN 1.80 KGF-CM AND 2.00 KGF-CM.
9. DIMENSION D1 DENOTES THE SCAN LENGTH.
10. DIMENSION K DENOTES THE POSITION OF THE FIRST PIXEL.

| MILLIMETERS | | |
|-------------|--------|--------|
| DIM | MIN | MAX |
| A | 12.60 | 13.60 |
| A1 | 5.45 | 6.45 |
| A2 | 13.20 | 14.20 |
| B | 17.70 | 18.30 |
| B1 | 18.90 | 19.50 |
| B2 | 5.50 | 6.50 |
| C | 15.40 | 15.60 |
| D | 231.60 | 232.60 |
| D1 | 216.00 | REF |
| E | 2.10 | 2.30 |
| F | 112.50 | 113.50 |
| H | 34.80 | 35.80 |
| J | 5.70 | 6.30 |
| K | 5.30 | 7.30 |
| L | 6.00 | REF |