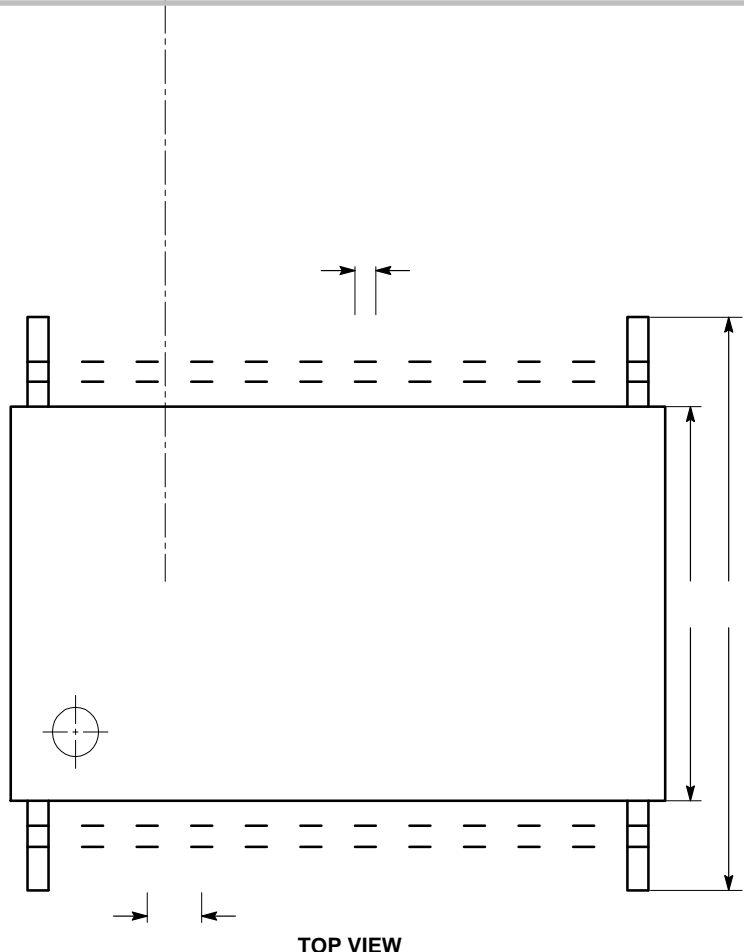


TSSOP24, 4.4x7.8  
CASE 948AR i01  
ISSUE A

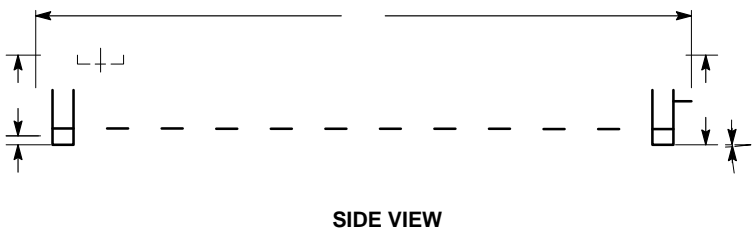
DATE 17 MAR 20090101

**MECHANICAL CASE OUTLINE**  
**PACKAGE DIMENSIONS**

ON Set  
r<sup>®</sup>



SYMBOL	MIN	NOM	MAX
A			1.20
A1	0.05		0.15
A2	0.80		1.05
b	0.19		0.30
c	0.09		0.20
D	7.70	7.80	7.90
E	6.25	6.40	6.55
E1	4.30	4.40	4.50
e	0.65 BSC		
L	0.50	0.60	0.70
L1	1.00 REF		



Notes:  
1. All dimensions are in millimeters.  
2. Lead length L1 is a reference dimension.