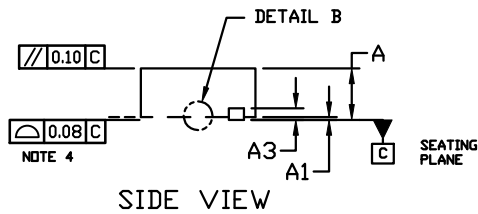
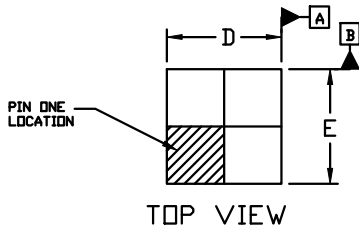


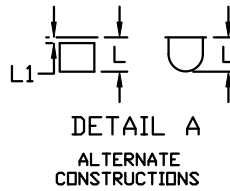
**X2QFN8, 1.5x1.5, 0.5P**  
CASE 722AM  
ISSUE O

DATE 20 JUL 2018



ASME Y14.5M, 1994-R

3. DIMENSION b APPLICABLE TO THE PLATED TERMINALS AND IS MEASURED BETWEEN THE TERMINALS 0.20 FROM THE TERMINAL TIP.
4. COPLANARITY APPLIES TO THE EXPOSED PAD AS WELL AS THE TERMINALS.



			MAX.
			0.40
			0.05
			0.25
D	1.50	1.55	
	1.45	1.50	1.5
L	0.30	0.35	
L1	-	0.10	

DETAIL B

7X

CONSTRUCTIONS

BOTTOM VIEW

**GENERIC  
MARKING DIAGRAM\***



- X = Specific Device Code
- M = Date Code
- = Pb-Free Package

(Note: Microdot may be in either location)

\*This information is generic. Please refer to device data sheet for actual part marking. Pb-Free indicator, "G" or microdot "▪", may or may not be present. Some products may not follow the Generic Marking.

