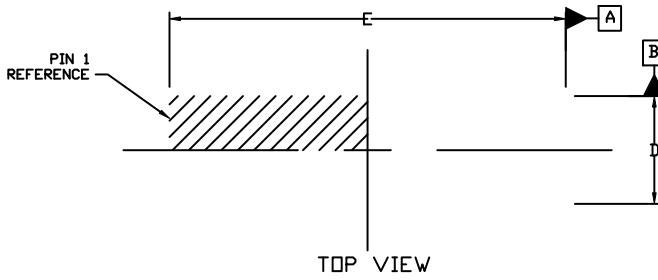


WLCSP30, 1.175x4.3x0.33
CASE 567WW
ISSUE O

DATE 18 JUL 2018

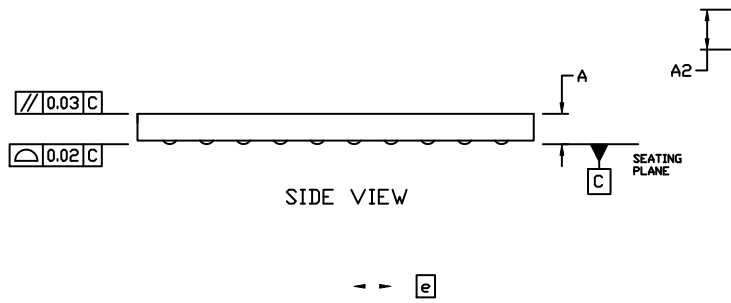


NOTES:

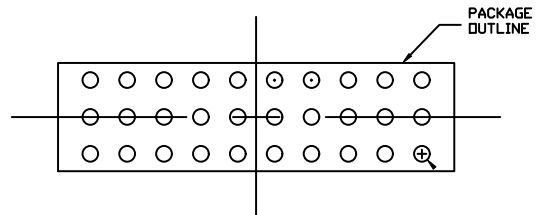
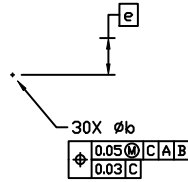
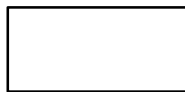
1. DIMENSIONING AND TOLERANCING PER ASME Y14.5M, 1994.
2. CONTROLLING DIMENSION: MILLIMETERS
3. DATUM C, THE SEATING PLANE, IS DEFINED BY THE SPHERICAL CROWNS OF THE CONTACT BALLS.
4. COPLANARITY APPLIES TO THE SPHERICAL CROWNS OF THE CONTACT BALLS.

CONTACT BALL DIAMETER PAR 5 6 7 8 9 10

DIM	MILLIMETERS		
	MIN.	NOM.	MAX.
A			0.35
A1	0.034	0.040	0.046
A2	0.278	0.290	0.303
b	0.15	0.17	
	1.15		J
	4.275		4.325



BOTTOM VIEW



PACKAGE OUTLINE