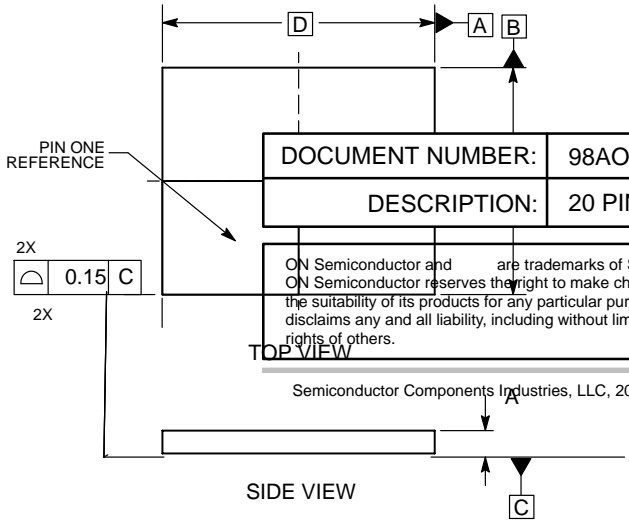


20 PIN LLGA, 6x5, 0.8P
CASE 513AC
ISSUE C

DATE 14 JAN 2014

SCALE 2:1



- NOTES:
1. DIMENSIONING AND TOLERANCING PER ASME Y14.5M, 1994 .
 2. CONTROLLING DIMENSION: MILLIMETERS.
 3. DIMENSION b APPLIES TO PLATED TERMINAL AND IS MEASURED BETWEEN 0.25 AND 0.30 MM FROM TERMINAL.

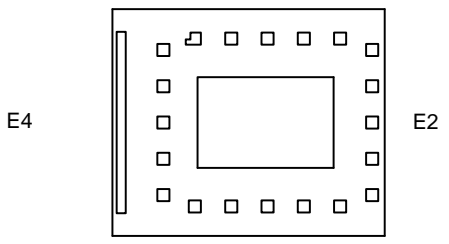
DOCUMENT NUMBER:	98AON22223D	Electronic versions are uncontrolled except when accessed directly from the Document Management System. Printed versions are uncontrolled except when stamped "CONTROLLED COPY" in red.
DESCRIPTION:	20 PIN LLGA, 6X5X0.5, 0.8P	PAGE
<p>ON Semiconductor and are trademarks of Semiconductor Components Industries, LLC dba ON Semiconductor or its subsidiaries in the United States and/or other countries. ON Semiconductor reserves the right to make changes without further notice to any products herein. ON Semiconductor makes no warranty, representation or guarantee regarding the suitability of its products for any particular purpose, nor does ON Semiconductor assume any liability arising out of the application or use of any product or circuit, and disclaims any and all liability, including without limitation special, consequential or incidental damages. ON Semiconductor does not convey any license under its patent rights or trademarks.</p>		

TOP VIEW

Semiconductor Components Industries, LLC, 2019

www.onsemi.com

SIDE VIEW



D2
BOTTOM VIEW