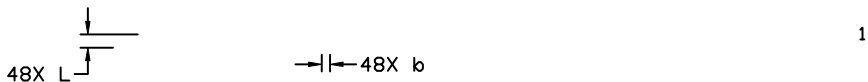
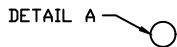
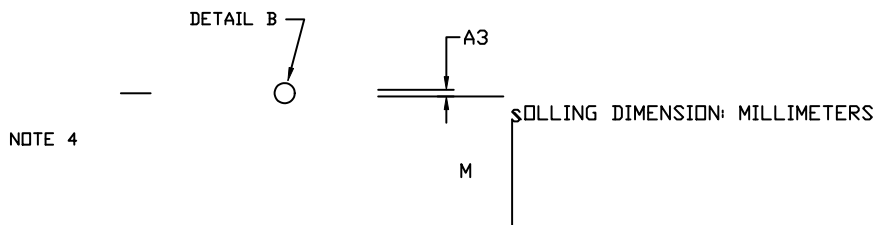


QFNW48 7x7, 0.5P
CASE 512AD
ISSUE B

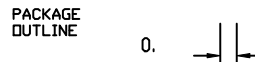
DATE 18 JAN 2019

PIN 1
REFERENCE

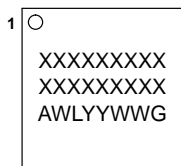
1. DIMENSIONING AND TOLERANCING PER ASME Y14.5M, 2009.
3. DIMENSION *b* APPLIES TO PLATED TERMINAL AND IS MEASURED BETWEEN 0.15 AND 0.30 MM FROM THE
4. COPLANARITY APPLIES TO THE EXPOSED PAD AS WELL AS THE TERMINALS.



NOTE 3



GENERIC MARKING DIAGRAM*



A = Assembly Location
WL = Wafer Lot
YY = Year
WW = Work Week
G = Pb-Free Package

*This information is generic. Please refer to device data sheet for actual part marking. Pb-Free indicator, "G" or microdot "•", may or may not be present. Some products may not follow the Generic Marking.