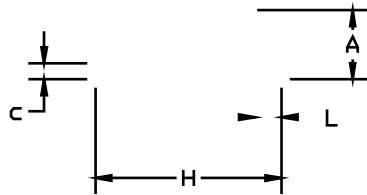


NOTES:

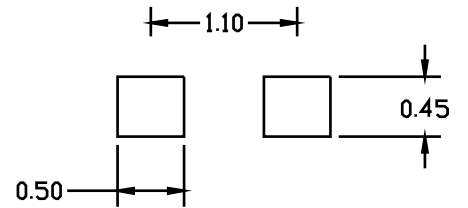
1. DIMENSIONING AND TOLERANCING PER ASME Y14.5M, 2018.
2. CONTROLLING DIMENSIONS: MILLIMETER.
3. MAXIMUM LEAD THICKNESS INCLUDES LEAD FINISH THICKNESS. MINIMUM LEAD THICKNESS IS THE MINIMUM THICKNESS OF BASE MATERIAL.

TOP VII



DIM	MILLIMETERS		
	MIN.	NOM.	MAX.
A	0.49	0.52	0.55
b	0.25	0.28	0.32
c	0.08	0.12	0.15
D	0.95	1.00	1.05
E	0.55	0.60	0.65
H	1.35	1.40	1.45
L	0.15	0.20	0.25

XX = Specific Device Code



Manual legy qference
, SOLDERM/D.