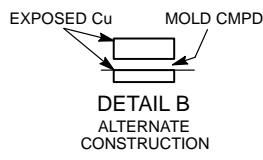
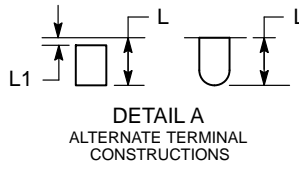
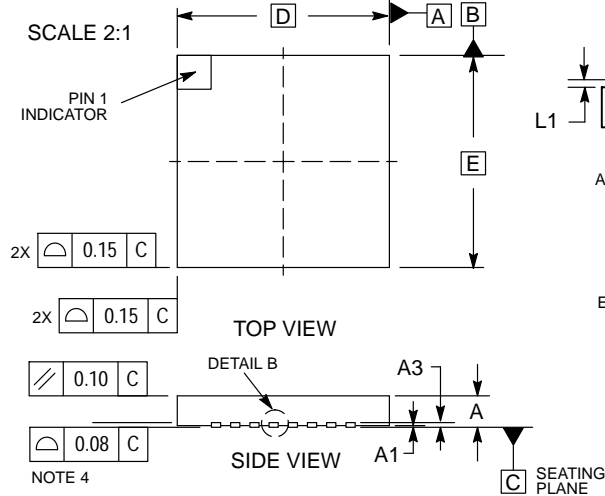
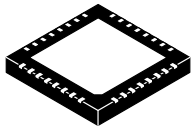


MECHANICAL CASE OUTLINE PACKAGE DIMENSIONS

ON

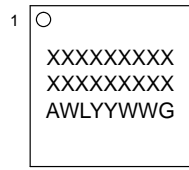
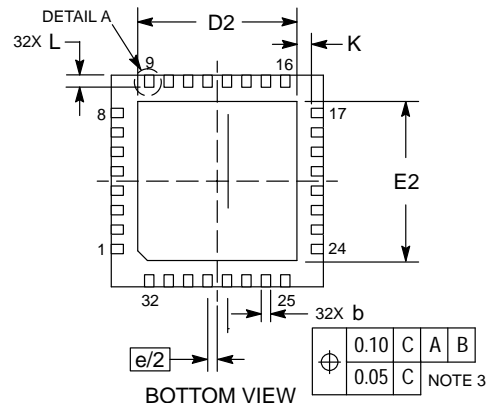
QFN32 7x7, 0.65P
CASE 485J i02
ISSUE E

DATE 30 JAN 2013



- NOTES:
1. DIMENSIONING AND TOLERANCING PER ASME Y14.5M, 1994.
 2. CONTROLLING DIMENSION: MILLIMETERS.
 3. DIMENSION b APPLIES TO PLATED TERMINAL AND IS MEASURED BETWEEN 0.15 AND 0.25MM FROM THE TERMINAL TIP.
 4. COPLANARITY APPLIES TO THE EXPOSED PAD AS WELL AS THE TERMINALS.

L1 | 0.00 | 0.15 |



- A = Assembly Location
- WL = Wafer Lot
- YY = Year
- WW = Work Week
- G = Pb iFree Package

RECOMMENDED MOUNTING FOOTPRINT

