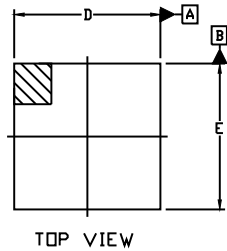


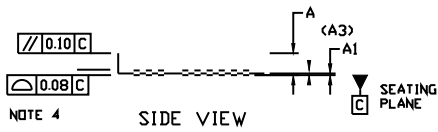
QFN20 6x6, 0.5P



TOP VIEW

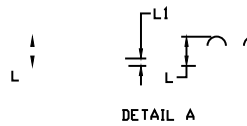
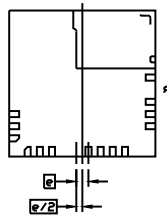
NOTES:

1. DIMENSIONING AND TOLERANCING PER ASME Y14.5M, 2009.
2. CONTROLLING DIMENSION: MILLIMETERS
3. DIMENSION b APPLIES TO PLATED TERMINAL AND IS MEASURED BETWEEN 0.15 AND 0.30 FROM THE TERMINAL TIP.
4. COPLANARITY APPLIES TO THE EXPOSED PADS AS WELL AS THE TERMINALS.

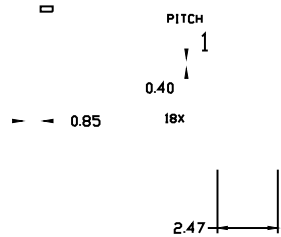
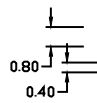


NOTE 4

SIDE VIEW



DIM	MIN.	
A	0.80	
A1	0.00	
A3	0.2.	
b	0.15 AX.	
	1.00	
	0.05	
	0.30	
D5	1.50	
	2.35	
E4	2.28	2.38
E5	2.20	2.30
L3	0.10	
	0.50	
	0.1	



RECOMMENDED MOUNTING FOOTPRINT*

* For additional information on our Pb-Free strategy and soldering details, please download the ON Semiconductor Soldering and Mounting Techniques Reference Manual, SLD.DERRM/D.