

ECOM 
PLEASE CONTACT YOUR onsemi NEW DESIGN

DIS

DIS

DISCONTINUED
THIS DEVICE IS N

DISCONTIN

DISCONTINUED
THIS DEVICE IS NOT RECOMMENDED FOR

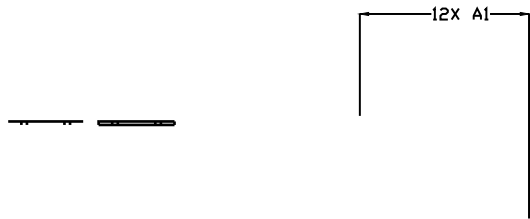
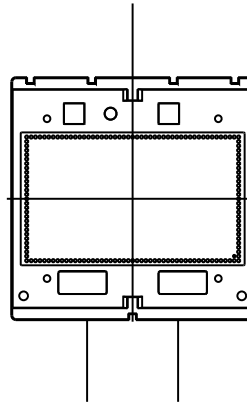
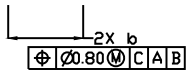
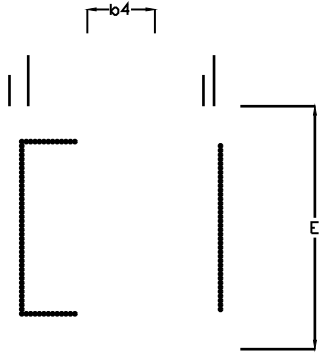
DI



DISCONTINUED
THIS DEVICE IS NOT RECOMMENDED FOR NEW

DISCONTINUED
THIS DEVICE IS NOT RE

NOTES:
1. DIMENSIONING AND TOLERANCING PER. ASME Y14



onsemi, **onsemi**, and other names, marks, and brands are registered and/or common law trademarks of Semiconductor Components Industries, LLC dba "**onsemi**" or its affiliates and/or subsidiaries in the United States and/or other countries. **onsemi** owns the rights to a number of patents, trademarks, copyrights, trade secrets, and other intellectual property. A listing of **onsemi**'s product/patent coverage may be accessed at www.onsemi.com/site/pdf/Patent-Marking.pdf. **onsemi** reserves the right to make changes at any time to any products or information herein, without notice. The information herein is provided "as-is" and **onsemi** makes no warranty, representation or guarantee regarding the accuracy of the information, product features, availability, functionality, or suitability of its products for any particular purpose, nor does **onsemi** assume any liability arising out of the application or use of any product or circuit, and specifically disclaims any and all liability, including without limitation special, consequential or incidental damages. Buyer is responsible for its products and applications using **onsemi**
