

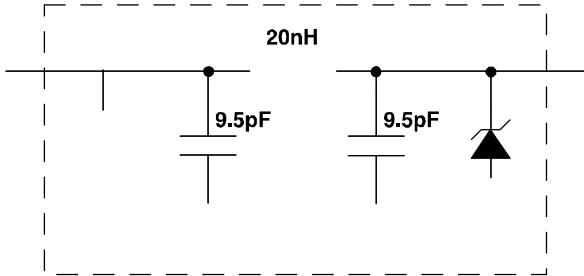


Praetorian® 8-Channel EMI Filter Array with ESD Protection

CM1453-08CP

r

- Eight channels of EMI filtering
- $\pm 15\text{kV}$ ESD protection
(IEC 61000-4-2, contact discharge)
- $\pm 30\text{kV}$ ESD protection (HBM)
- Greater than -40dB of attenuation at 1GHz
- Chip Scale Package (CSP) with 0.40mm pitch and 0.25mm CSP solder ball which features extremely low parasitic inductance for optimum filter and ESD performance
- *OptiGuard*



CM1453-08CP

R / O			
U B R		U B R	
-0		-0	
A1	Filter #1	C1	Filter #1
A2	Filter #2	C2	Filter #2
A3	Filter #3	C3	Filter #3
A4	Filter #4	C4	Filter #4
A5	Filter #5	C5	Filter #5
A6	Filter #6	C6	Filter #6
A7	Filter #7	C7	Filter #7
A8	Filter #8	C8	Filter #8
B1	GND	-	
B2	GND	-	
B3	GND	-	
B4	GND	-	

Or r g , s r s

AR U B R , OR A O			
B	g	- r	
		Or r g r r ¹	r r g
20	CSP	CM1453-08CP	N538

Note 1: Parts are shipped in Tape & Reel form unless otherwise specified.

9

ABOU A U RA U		
ARA R	RA U	U U
Storage Temperature Range	-65 to +150	°C
DC current per Inductor	30	mA
DC Package Power Rating	0.5	W

A AR O RA U O O		
ARA R	RA U	U U
Operating Temperature Range	-40 to +85	°C

CM1453-08CP



Figure 1. Typical Performance Characteristics (1453-08CP)



Figure 1. Typical Performance Characteristics (1453-08CP)

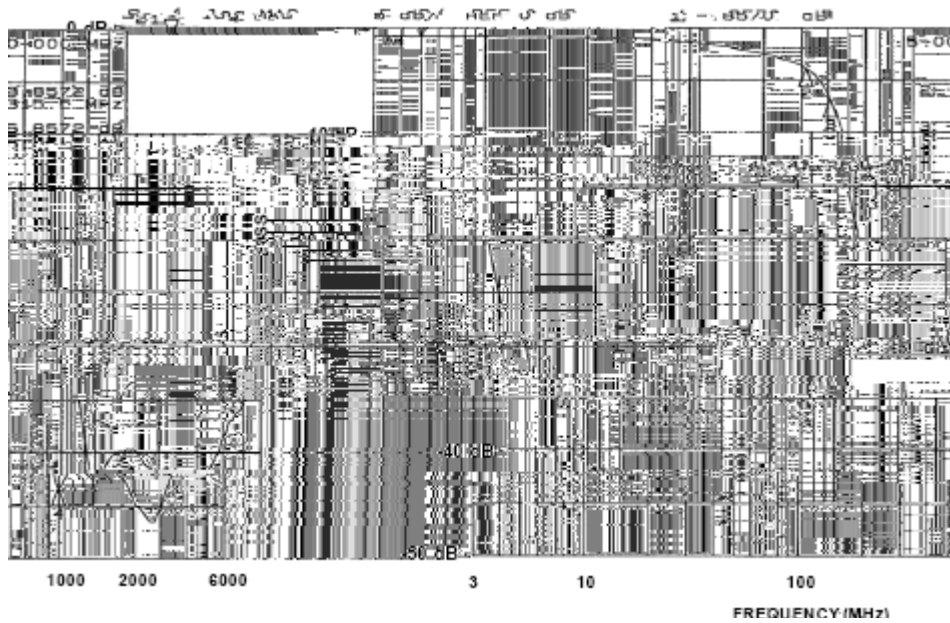
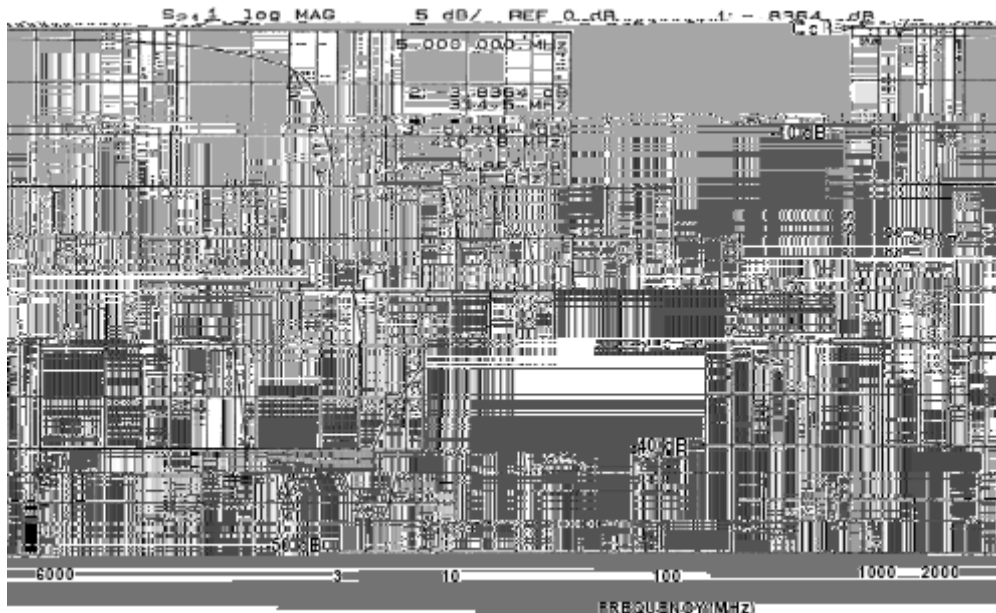


Figure 2. Typical Performance Characteristics (1453-08CP)

CM1453-08CP

r r , r r (r ')
r r r r (r , r , r , 500 r)



g r 5. , r , . r (1453-0⁹ , r 5)

Ses1 log MAG 5 dB/ REF 0 dB 5.000000 MHz
3.475 MHz 0.000000 dB

g r . , r , . r (1453-0⁹ , r)

r, r / r (')

/ / r r (r ') , 50 O(2003 2003B)254

Figure 9. (a)

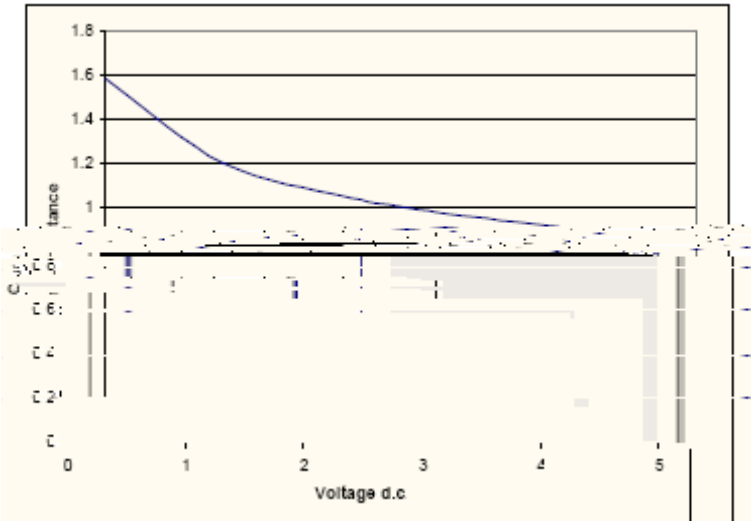


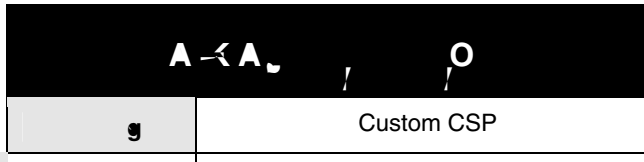
Figure 9. (b)

A

Refer to Application Note AP-217, "The Chip Scale Package", for a detailed description of Chip Scale Packages offered by California Micro Devices. See <http://www.wlcsforum.org/documents/pdf/ap-217.pdf> for download.

CM1453-08CP

CM1453 devices are packaged in custom Chip Scale Packages (CSP). See Application Note AP-217 for more information at: <http://www.wlcsforum.org/documents/pdf/ap-217.pdf>.



AR	UBR	()	$O \leftarrow B_0 \quad A_0' \leftarrow \xi_0$ ()	A	$\leftarrow R \quad \leftarrow Q \quad \leftarrow R$		
CM1453-08CP	3.27 X 1.14 X 0.615	()	3.40 X 1.27 X 0.73	12mm	330mm (13")	3500	4mm 4mm

