

Low-Voltage 16-Bit Bidirectional Transceiver with 3.6 V Tolerant Input and Output

74ALVC16245

General Description

Features

-

DI

THI
DISCONTINUED

DI

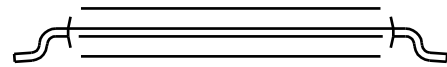
DISCONTINUED

TSSOP48 12.5x6.1



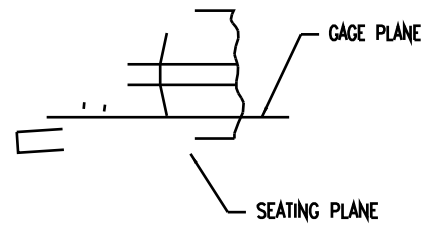
LAND PATTERN RECOMMENDATION

SEE DETAIL A



DIMENSIONS ARE IN MILLIMETERS

AND TIE BAR EXTRUSIONS.



DETAIL A

onsemi, **onsemi**, and other names, marks, and brands are registered and/or common law trademarks of Semiconductor Components Industries, LLC dba "**onsemi**" or its affiliates and/or subsidiaries in the United States and/or other countries. **onsemi** owns the rights to a number of patents, trademarks, copyrights, trade secrets, and other intellectual property. A listing of **onsemi**'s product/patent coverage may be accessed at www.onsemi.com/site/pdf/Patent-Marking.pdf. **onsemi** reserves the right to make changes at any time to any products or information herein, without notice. The information herein is provided "as-is" and **onsemi** makes no warranty, representation or guarantee regarding the accuracy of the information, product features, availability, functionality, or suitability of its products for any particular purpose, nor does **onsemi** assume any liability arising out of the application or use of any product or circuit, and specifically disclaims any and all liability, including without limitation special, consequential or incidental damages. Buyer is responsible for its products and applications using **onsemi**
